



BARRIER FREE

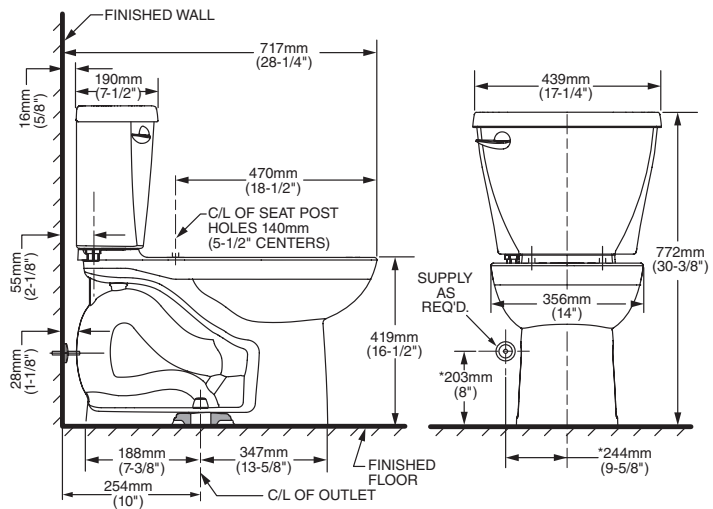
SAVER® CADET® 3 RIGHT HEIGHT® ELONGATED HET 10" ROUGH COMPLETE TOILET

VITREOUS CHINA

SAVER® CADET® 3 RIGHT HEIGHT® ELONGATED HET 10" ROUGH COMPLETE TOILET

☐ 710AB.101

- Vitreous china
- Meets definition for HET (High Efficiency Toilet)
- High Efficiency (1.28 gpf/4.8 Lpf)
- Meets EPA WaterSense® criteria
- Space saving compact design - Elongated bowl fits in the same space as a round front toilet
- 10" (254mm) Rough-in
- 16-1/2" rim height for accessible applications
- EverClean® surface inhibits the growth of stain and odor causing bacteria, mold and mildew on the surface
- Featuring the **Cadet® 3 Flushing System**
- Elongated siphon action jetted bowl with 2-1/8" trapway
- Internal trapway area fully glazed
- Generous 8" x 9" water surface area
- PowerWash® rim scrubs bowl with pressurized water every flush
- Close coupled tank with flat tank cover for superior storage
- Oversized 3" Flush Valve with Chemical Resistant Flapper
- Features **No Tools Installation**. Everything needed for toilet installation is included and can be hand tightened
- Sanitary dam on bowl with four point tank stabilization
- 2 color match bolt caps
- Chrome Trip Lever
- Color matched solid plastic seat with cover
- Wax ring gasket with closet bolts
- 100% factory flush tested
- Limited lifetime warranty on chinaware, 5 year warranty on all mechanical parts, and 1 year warranty on seat.



Nominal Dimensions:

717 x 439 x 772mm
(28-1/4" x 17-1/4" x 30-3/8")

Compliance Certifications -

Meets or Exceeds the Following Specifications:

- ASME A112.19.2-2008/CSA B45.1-08 for Vitreous China Fixtures
- US EPA WaterSense® Specification for HET's

To Be Specified:

- ☐ Color: ☐ White
- ☐ Supply with stop



MEETS THE AMERICANS WITH DISABILITIES ACT GUIDELINES AND ANSI A117.1 REQUIREMENTS FOR ACCESSIBLE AND USABLE BUILDING FACILITIES-CHECK LOCAL CODES.

NOTES:

THIS COMBINATION IS DESIGNED TO ROUGH-IN AT A MINIMUM DIMENSION OF 254MM (10") FROM FINISHED WALL TO C/L OF OUTLET.

* DIMENSIONS SHOWN FOR LOCATION OF SUPPLY ARE SUGGESTED. SUPPLY NOT INCLUDED WITH FIXTURE AND MUST BE ORDERED SEPARATELY.

IMPORTANT: Dimensions of fixtures are nominal and may vary within the range of tolerance established by ANSI Standard A112.19.2. These measurements are subject to change or cancellation. No responsibility is assumed for use of superseded or voided pages.

CADET® 3
Flushing System



No Tools
Installation

